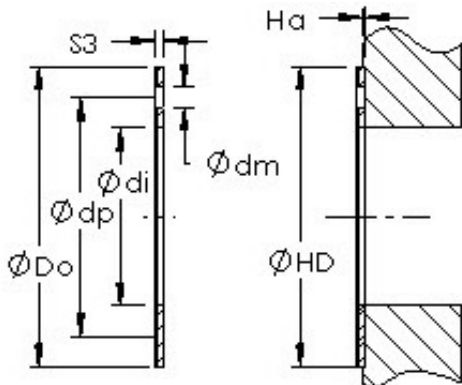




## Seo-NTN Driveshaft USA CORP.



AST20 WC111B Bearing 2D drawings and 3D CAD models

### AST AST20 WC111B plain bearings

Bearing No. AST20 WC111B

Bore Diameter	19,05 mm
Outer Diameter	34,925 mm
Bearing Type	thrust washer
Shaft Dia., Nominal (d)	0.7500
Bearing Outside Diameter, Nominal (Do)	1.375
Washer Inside Diameter, Nominal (di)	1
Washer Inside Diameter Tolerance (di tol.) - +.010 / -0	+0.010 / 0
Washer Outside Diameter, Nominal (Do)	1
Washer Outside Diameter Tolerance (Do tol.) - +0 / -.010	+0 / .010
Washer Thickness, Nominal (S3)	0
Washer Thickness Tolerance (S3 tol.) - +.035 / -0	+0.035 / 0
Mounting Hole Dia. (dm)	0.099
Mounting Hole Pitch Dia. (dp)	1.099
Housing Counterbore Depth (Ha)	0.04
Housing Counterbore Depth Tolerance (Ha tol.) - +.010 / -.010	+0.010 / .010
Housing Counterbore Diameter, Nominal (HD)	1.375



## Seo-NTN Driveshaft USA CORP.

Housing Counterbore Diameter Tolerance (HD tol.) - $+0.010 / -0$	$+0.010 / 0$
Material	Carbon steel shell with POM plastic liner